

Feathers and Stilettoes

Duration of the performance: approx. 55 min. without break.

TECHNICAL REQUIREMENTS

Feather and Stilettoes is a dance and performance piece with music and spoken word for one performer.

The setting of this show is simple. The stage is as bare and raw as possible. The floor is black or dark. There is one prop onstage - a black chair.

The following is a general description of the needs and requirements with regard to presentations on tour. Variations will occur consistent with the size of the stage/ Theatre

Lighting:

Please see the drawing on page 2 where the number and type of lamps and their location in the space are pointed out. Notice that we use 8 sidelights on stands at approx 2 m. height.

We bring our own lightdesk/ computer - pcstage- with a DMX output.

Sound Equipment:

Pa- system and monitor on stage. The sound is played directly from a computer. We come with a wireless microphone for a specialeffect. We need 3 XLR inputs on the soundconsole.

The Stage:

Minimum dimensions 8m wide x 7m deep.

Ideally, the show should be played directly on the floor, with the spectators placed frontally on a tribune that can allow everyone to see the entire surface of the stage floor. Alternatively, the show can be presented on a conventional stage. Note that it is important that the audience has direct access to the stage.

A dance carpet is not required, but the stage floor must be smooth, even, preferably suspended and of wood. No back drops or sidecurtains. Backwall visible and accessible for use.

Stage Hands:

There is no need for technical assistance during the presentation of the show. But the organizers must put the following personnel at the disposal of Company:

- 1 technician who is familiar with the venue, during setup of light and sound.
- 1 assistant for hanging and setup.

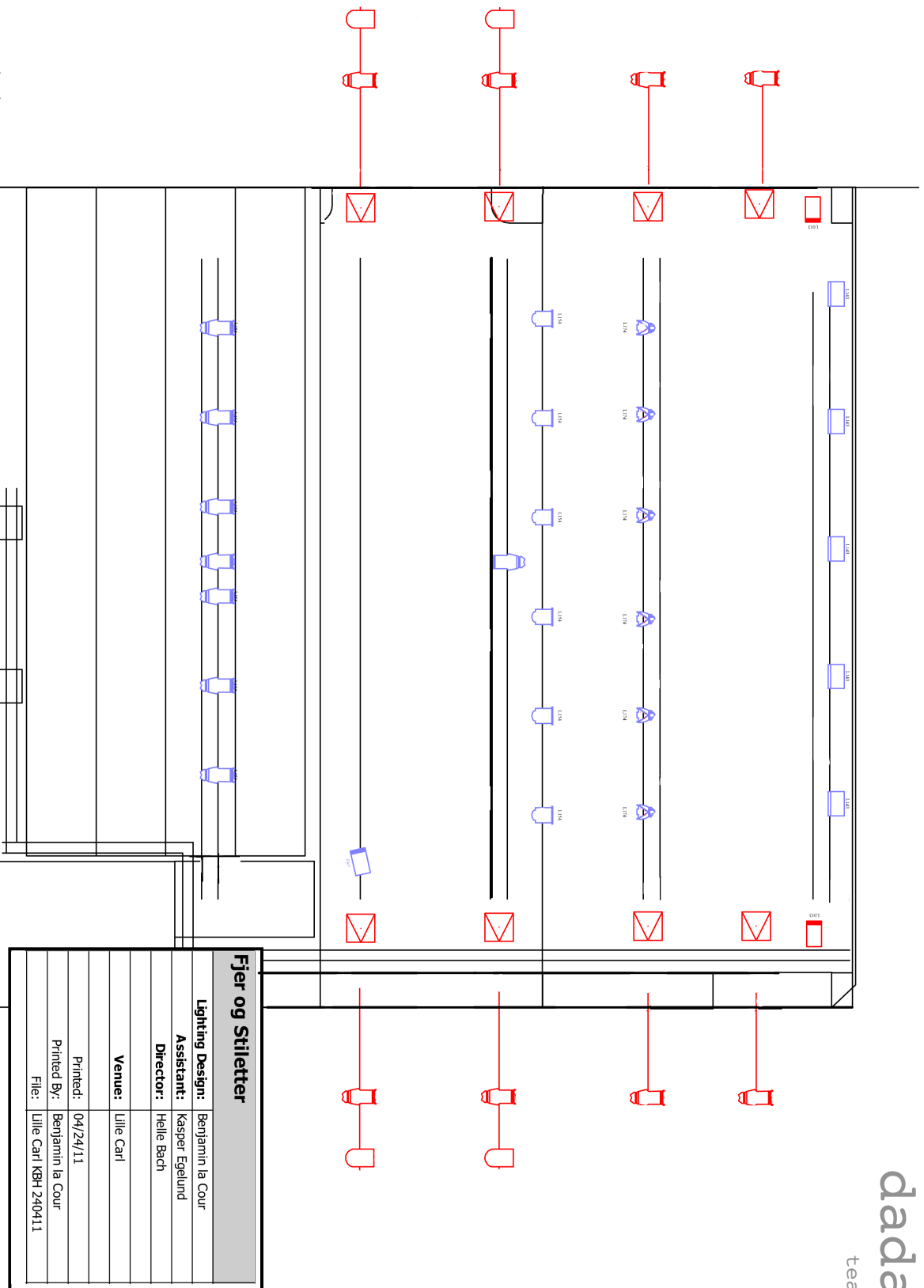
Setup and break down:

Under normal circumstances it must be assumed that the setup starts latest 8 hours before the show's beginning time. If the light is hung on arrival setup is 3 hours. Dismantling will take approx. 1-2 hours.

Back stage:

1 dressing room is required with table, chair and mirror(1 performer), close to running water, toilet and a shower.

For further information, please contact Kasper Egelund/ kasper@nojazz.dk/
cell: +45 4034 4008



Fjer og Stiletter	
Lighting Design:	Benjamin la Cour
Assistant:	Kasper Egelund
Director:	Helle Bach
Venue:	Lille Carl
Printed:	04/24/11
Printed By:	Benjamin la Cour
File:	Lille Carl KØH 240411

- 24 ch. dimmer
- Cabels
- 5-6 ADB Cycloorama or. similar (Backwall)
- 6 Source 4 Par XWFL or. similar (top lights)
- 10 Source 4jr 25/50 or. similar (2 effects, 8 sidelights)
- 3 Spotlight PC/fresnel or. similar (2 back on the floor, 1 effect)
- 12 Robert Juliat Fresnell or. similar (Front 1 and front 2)
- 4 Rebo par LED or similar
- 8 side stands
- 2 floor stand